

ICB update

Adult Social Care and Health Scrutiny Committee

Thursday 21 March 2024

Key updates

- **Measles** - recent increase of measles in the north west; Measles, Mumps, Rubella (MMR) vaccine is free on the NHS - available from local GP surgeries and local pop-up clinics.
- **Industrial action** – further impact on Blackpool Teaching Hospitals by recent strikes. Members of the public are encouraged to use services wisely and appropriately.
- **New children's mental health contracts** have been awarded to four providers: Barnardo's; Spring North; ADHD North West; Kooth
- **Dental support** - Blackpool residents have access to urgent NHS dental advice and treatment via a dedicated helpline. The service is available by calling 0300 1234010 between 8am and 9pm Monday to Friday, or 10am to 5pm at the weekend and on bank holidays



Key updates

- **Pharmacy update** - people living in Blackpool can access treatment for seven common conditions at high street pharmacies: sinusitis, sore throat, earache, infected insect bite, impetigo, shingles and uncomplicated urinary tract infections.
- **New role will support families in Blackpool** - Louise Peacock is the new maternity and neonatal independent senior advocate, to ensure the voices of women and families are listened to and acted upon.
- **Patients benefit from community diagnostic centres** - over 210,000 patients across Lancashire and South Cumbria have now received diagnostic tests at local Community Diagnostics Centres, including Whitegate Drive Health Centre in Blackpool.



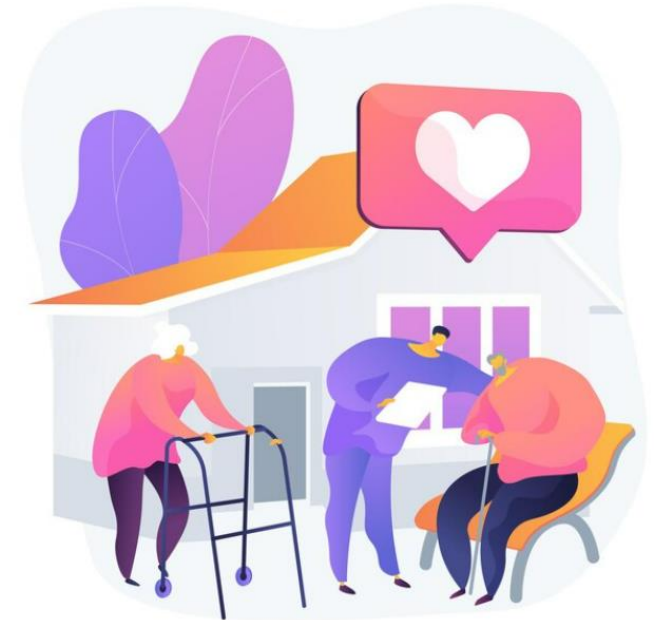
Recovery and transformation

- Core purpose of an ICB:
 - improve outcomes in population health and healthcare
 - tackle inequalities in outcomes, experience and access
 - enhance productivity and value for money
 - help the NHS support broader social and economic development
- Lancashire and South Cumbria's health and care system faces some significant challenges:
 - Too many services in too many places
 - High agency/locum use
 - Many services with vulnerability such as work force challenges
 - Insufficient scale – some with poor quality outcomes and overspend



Development of clinical strategy

- Three key inter-related arms to the clinical strategy:
 - New models of care (Transforming Care in the Community)
 - Clinical effectiveness (Transforming Care in our Hospitals)
 - Quality improvement with better use of resources, leading to CQC Good or better and SOF 2 or better ratings for our services.
- This will require a major shift from an acute to a community-centred model.
- Collaborative partnership working is required across all parts of the Lancashire and South Cumbria Integrated Care System, including in Blackpool as one of the four places.



Clinical strategy

There are two critical components to this:

- Transforming Care in the Community
 - Creating Healthy Communities
 - Integrated Neighbourhood Teams
 - Enhanced Care in the Community
- Transforming Care in our Hospitals
 - Rolling programme to address fragile services
 - Rolling programme of service reconfiguration
 - Development of One LSC clinical configuration blueprint / delivery roadmap



Resource and capacity

- The programme requires resources to deliver and the ICB and Provider Collaborative are working together to support the programmes, with senior responsible officers being identified for each programme.
- It is recognised that resource capacity and capability may well be a constraining factor, especially when considering the need to avoid adding additional costs into the system.
- Partners are actively considering alternative models of delivery that could help to accelerate delivery of value with enabling costs contingent on value delivered rather than being an up-front risk.





**Lancashire and
South Cumbria**
Integrated Care Board

Web lancashireandsouthcumbria.icb.nhs.uk | **Facebook** [@LSCICB](https://www.facebook.com/LSCICB) | **Twitter** [@LSCICB](https://twitter.com/LSCICB)